

BEFORE YOU BEGIN

- Please read these instructions carefully to familiarize yourself with the required tools, materials, and installation sequences. Follow the sections that pertain to your particular installation. This will help you avoid costly mistakes. In addition to proper installation, read all operating and safety instructions.
- All information in these instructions is based upon the latest product information available at the time of publication. Kohler China reserves the right to make changes in product characteristics, packaging, or availability at any time without notice.
- These instructions contain important care, cleaning, and warranty information—**please leave instructions for the consumer.**

安装之前

- 请仔细阅读说明书，熟悉所需工具、材料和安装顺序，参照相关章节完成您所需的安装，以避免昂贵的损失，除了正确的安装外，请详阅所有的操作和安全说明。
- 本说明书所含的一切资料均以印刷时所有的最新产品为准，科勒中国保留权利随时更改产品特性、包装或供应情况，恕不另行通知。
- 本说明书也包含了有关保养、清洁及产品担保等重要信息—请交予用户保存。

ORDERING INFORMATION

ESCALE Wall-hung Toilet	K-19045W
Includes: ESCALE Quiet-close Toilet Seat	E-1417
FREELANCE Wall-hung Toilet	K-18132T
Includes: FREELANCE Wall-hung Bowl	K-19461K
FREELANCE Toilet Seat	K-4707T
FREELANCE Wall-hung Toilet with Quiet-close Seat ..	K-18132T-S
Includes: FREELANCE Wall-hung Bowl	K-19461K
FREELANCE Quiet-close Toilet Seat	K-4735T
PRESQU'ILE Wall-hung Toilet	K-18133T
Includes: PRESQU'ILE Wall-hung Bowl	K-19080K
PRESQU'ILE Toilet Seat	K-8745T
PRESQU'ILE Wall-hung Toilet with Quiet-close Seat ..	K-18133T-S
Includes: PRESQU'ILE Wall-hung Bowl	K-19080K
PRESQU'ILE Quiet-close Toilet Seat	K-8798T
OVE Wall-hung Toilet	K-17647T
Includes: OVE Wall-hung Bowl	K-19957T
OVE Toilet Seat	K-17671T
OVE Wall-hung Toilet with Quiet-close Seat	K-17647T-S
Includes: OVE Wall-hung Bowl	K-19957T
OVE Quiet-close Toilet Seat	K-17676T

定购信息

艾思格尔挂墙式座便器	K-19045W
包括: 艾思格尔缓降座便器盖板	E-1417
费丽兰挂墙式座便器	K-18132T
包括: 费丽兰挂墙式座便器缸体	K-19461K
费丽兰座便器盖板	K-4707T
费丽兰挂墙式座便器带缓降盖板	K-18132T-S
包括: 费丽兰挂墙式座便器缸体	K-19461K
费丽兰缓降座便器盖板	K-4735T
佩斯格挂墙式座便器	K-18133T
包括: 佩斯格挂墙式座便器缸体	K-19080K
佩斯格座便器盖板	K-8745T
佩斯格挂墙式座便器带缓降盖板	K-18133T-S
包括: 佩斯格挂墙式座便器缸体	K-19080K
佩斯格缓降座便器盖板	K-8798T
欧芙挂墙式座便器	K-17647T
包括: 欧芙挂墙式座便器缸体	K-19957T
欧芙座便器盖板	K-17671T
欧芙挂墙式座便器带缓降盖板	K-17647T-S
包括: 欧芙挂墙式座便器缸体	K-19957T
欧芙缓降座便器盖板	K-17676T

NOTES

- Observe all local plumbing and building codes.
- Shut off the water supply.
- For values of seat post hole centers, please refer to dimension.
- Passageways is 60mm.
- Please refer to actual for the value of water depth from rim.
- Ensure that the new drain and shut-off valve have the correct roughing-in dimensions. **See Fig.#1.**
- Be very careful while working with vitreous china products. Vitreous china can break or chip if the bolts or nuts are overtightened, or if carelessly handled.
- Carefully inspect the new bowl for any sign of damage.
- Fixture dimensions are nominal and conform to tolerances established by ASME Standards (A112. 19.2M).

注意

- 请遵守当地所有给排水及建筑规定。
- 关闭供水。
- 座便器盖板孔中心间距请参考尺寸图。
- 排污通道为60mm。
- 座便器上表面距离水面以具体实物为准。
- 确保新排污管和止水阀坑距尺寸正确，请参阅图1。
- 请小心处理釉面陶瓷产品，因其容易破损和崩裂，故不可把螺栓或螺母上得过紧，且须小心轻放。
- 请仔细检查座便器是否有损坏。
- 部件尺寸为标定值，误差符合美国机械工程师学会标准 ASME(A112.19.2M)。

TOOLS AND MATERIALS REQUIRED (Not supplied)

- 254mm adjustable wrench
- Metal file (file cut)
- Tape measure
- Tubing cutter
- Level
- Hacksaw
- Putty knife
- Screwdriver
- Straight pipe coupling
- Connection packing

所需工具及材料(不随货供应)

- 254mm活动板钳
- 锉刀
- 卷尺
- 切管刀
- 水平尺
- 钢锯
- 涂油灰刀
- 螺丝刀
- 联结直管
- 联结组件

ROUGHING-IN

尺寸图

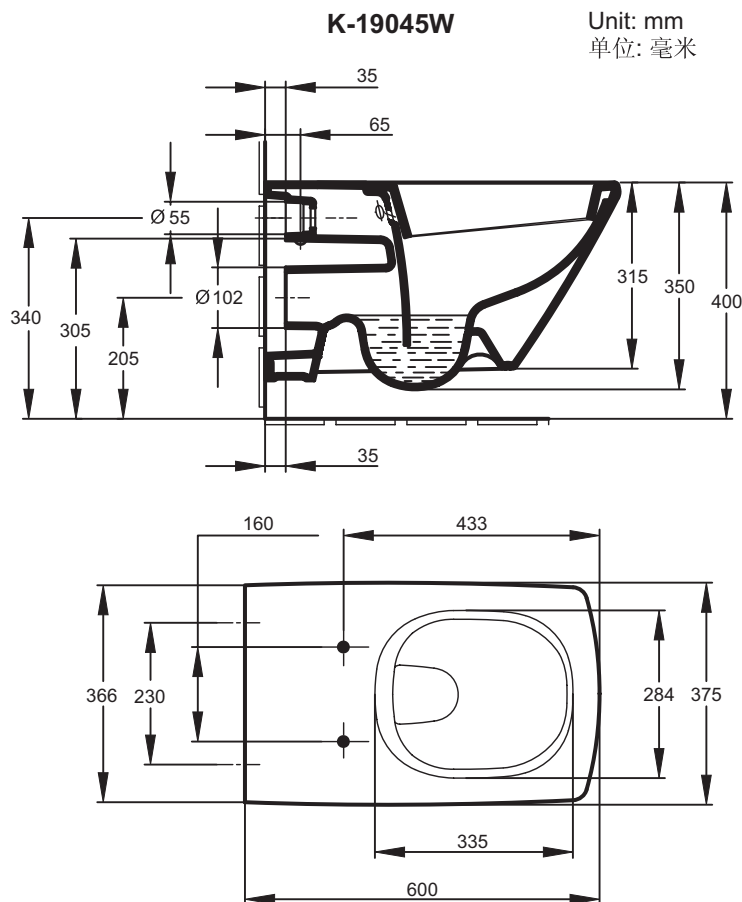


Fig.#1a
图1a

K-19461K

Unit: mm
单位: 毫米

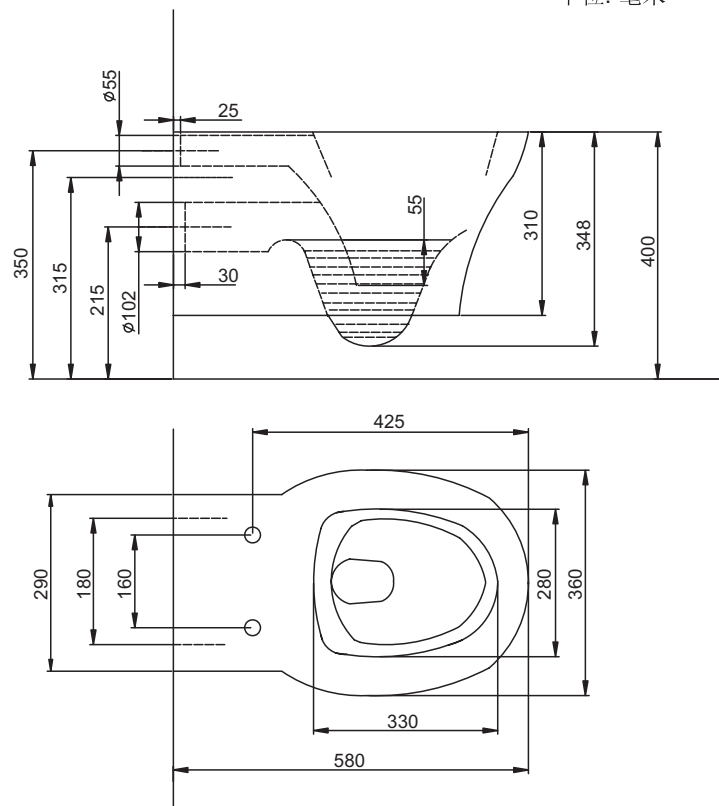


Fig.#1b
图1b

K-19080K

Unit: mm
单位: 毫米

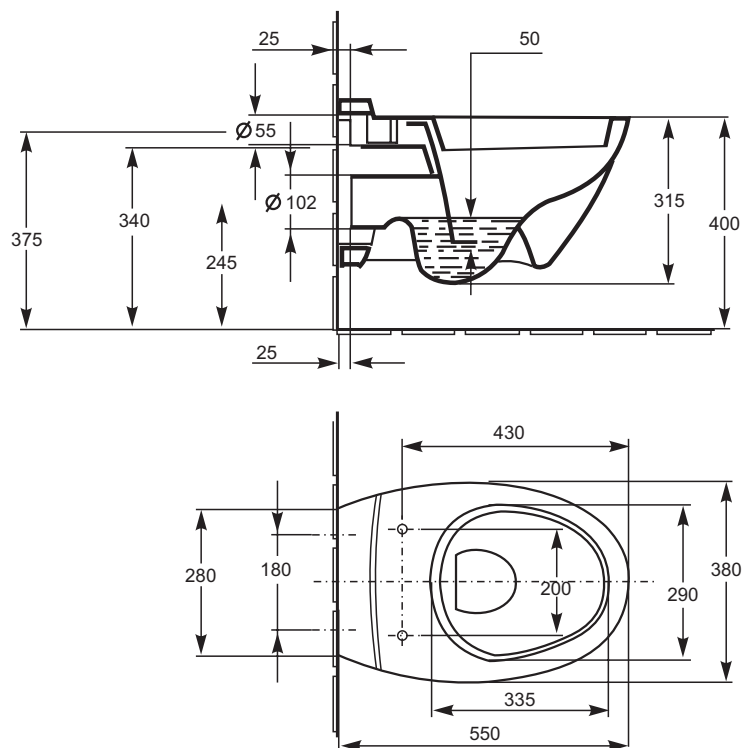


Fig.#1c
图1c

K-19957T

Unit: mm
单位: 毫米

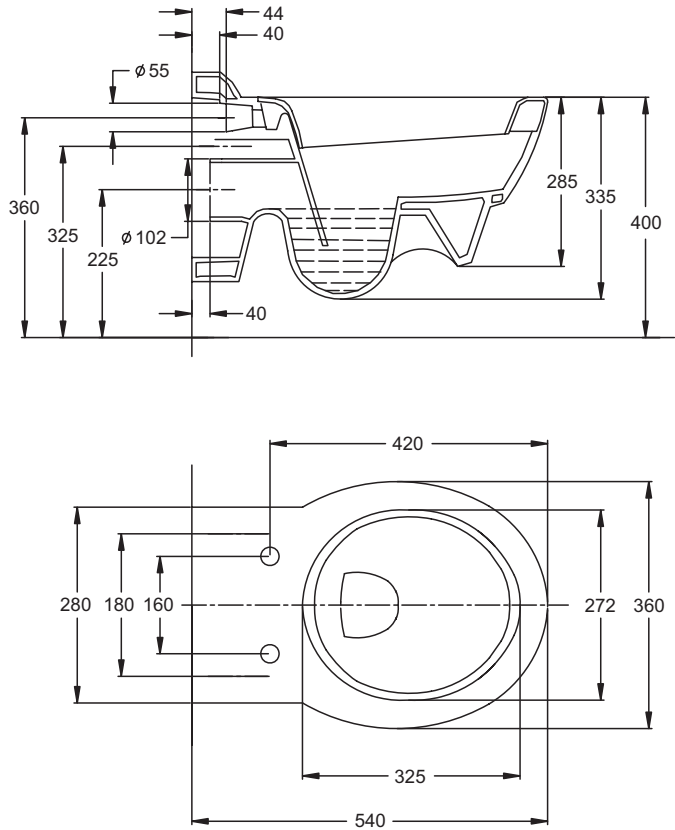


Fig.#1d
图1d

INSTALLATION

安装

1. INSTALL THE TANK

- Turn the water supply off before installing the new toilet.
- Install the concealed tank system in wall before decorating the wall.
- Install the tank system per tank's installation instructions.

Recommended in wall tanks (Fig.#2-a)

- 1) ODEON in wall tank and cover: K-6284T-NA-BA/K-6283T-*
- 2) OVE in wall tank and cover: K-6287T-NA/K-6288T-*

Recommended toilet sensor

ODEON toilet sensor K-744T

Recommended in wall frame K-16310T-NA (Fig.#2-b).

*For concrete installation steps, please refer to the installation instructions for K-744T, K-6284T-NA-BA, K-6287T-NA and K-16310T-NA.

1. 安装水箱

- 安装新座便器前先关闭供水。
- 在装饰墙面前先将入墙式水箱系统安装入墙体内。
- 参照水箱安装说明书完成水箱系统的安装。

推荐使用的入墙式隐藏水箱(图2-a)

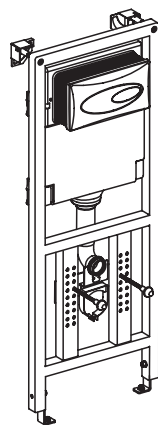
- 1) 奥帝安入墙式隐藏水箱和面板: K-6284T-NA-BA/K-6283T-*
- 2) 欧芙入墙式隐藏水箱和面板: K-6287T-NA/K-6288T-*

推荐使用的座便器感应器

奥帝安节水型座便器感应冲水器K-744T

推荐挂墙式座便器支架K-16310T-NA(图2-b)

*安装方法参考K-744T, K-6284T-NA-BA, K-6287T-NA和K-16310T-NA说明书。

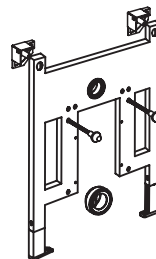


**K-6284T-NA-BA
K-6283T-***



**K-6287T-NA
K-6288T-***

Fig.#2-a
图2-a



K-16310T-NA

Fig.#2-b
图2-b

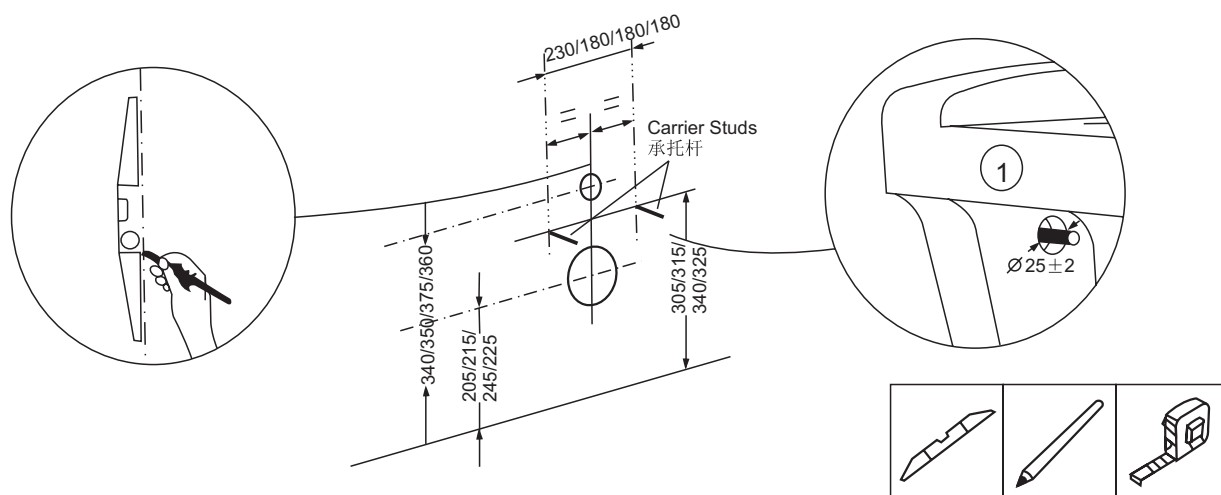
2. SET THE SPACING OF THE BOWL

After you install the tank, be careful to set the spacing of the bowl on wall according to the dimensions as shown.

2. 座便器定位

水箱安装完成后，根据图示尺寸，小心地在墙面上定好座便器的位置。

Unit: mm
单位: 毫米



(K-19045W/K-19461K/K-19080K/K-19957T)

Fig.#3
图3

3. ATTACH CONNECTION PIPE

- Attach pipe with gasket to the inlet to link to the concealed tank.
- Attach pipe with gasket to the outlet.
- *Apply gasket for sealing the bowl to wall.
- You may apply some lubricant to help connect smoothly.

3. 安装联结管

- 联结管装上垫圈，接上入水口，联结入墙式水箱。
- 联结管装上垫圈，接上排污口。
- *垫圈使座便器与墙面间严丝合缝。
- 可以使用润滑剂，有助联结。

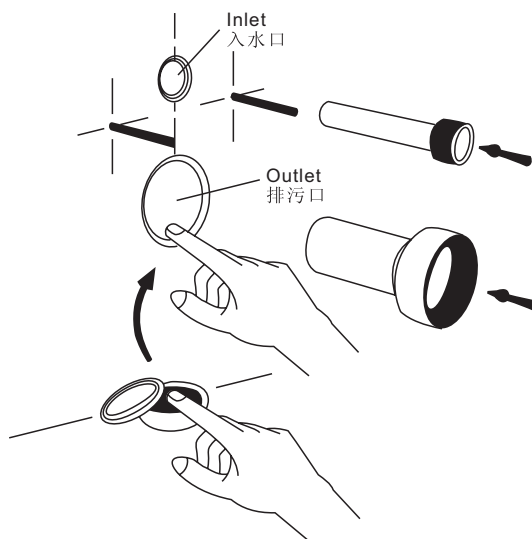
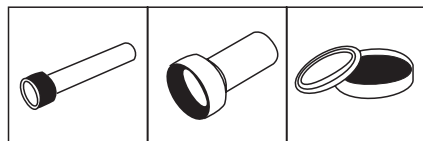


Fig.#4
图4

4. INSTALL THE NEW BOWL

Apply a little silicone sealant along the edge, to fill the gap between bowl and wall. **See Fig. 5a.**

4. 安装新座便器

沿座便器边缘涂少量硅胶密封胶，填补座便器与墙面之间的空隙。见图5a。



Fig. #5a
图5a

Place the new bowl on the wall through the carrier. Wrench the nut to tighten and make them attached securely.

See Fig. 5b.

- Torque for tightening nuts is recommended to be within the range from 8 Nm to 12 Nm.

座便器穿过承托杆置于墙上。上紧螺母，固定座便器。见图5b。

- 上紧螺母所用的扭矩推荐值为8Nm至12Nm。

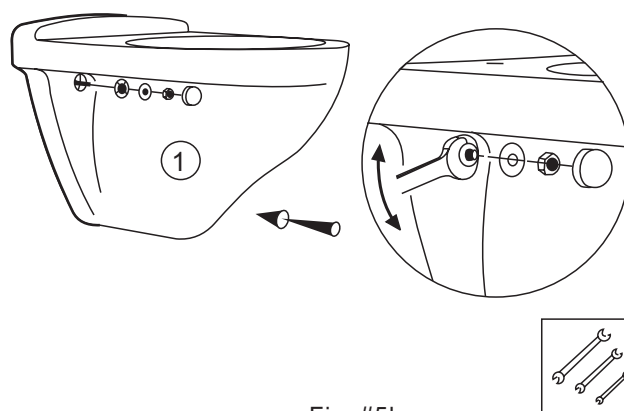


Fig. #5b
图5b

Adjust to horizontal and finish tightening. **See Fig. 5c.**

座便器调整至水平，然后完成固定。见图5c。

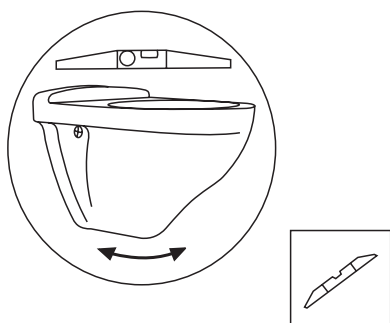


Fig. #5c
图5c

Apply sealant to make sure the bowl's edge seals to the wall.

See Fig. 5d.

使用密封胶，保证座便器边缘紧贴墙面。见图5d。



Fig. #5d
图5d

FINISH THE INSTALLATION

1. Ensure that all the connections are tight.
2. Turn on the water supply and check for any leaks.
3. Flush the toilet to check for correct operation.

完成安装

1. 确保所有连接已旋紧。
2. 打开供水管路以检查渗漏。
3. 试冲水以确定座便器安装正确。

IMPORTANT CONSUMER INFORMATION 用户须知

CONSUMER RESPONSIBILITIES

When cleaning up after installation, do not use abrasive cleansers, as they may scratch and dull the toilet surface. Use warm water and a liquid detergent to clean the surface.

Remove stubborn stains, paint, or tar with turpentine or paint thinner. Do not allow cleaners containing petroleum distillates to remain in contact with any toilet surface for long periods of time.

Remove plaster by carefully scraping with a wood edge. Do not use metal scrapers, wire brushes, or other metal tools. Use a powder type detergent on a damp cloth to provide mild abrasive action to any residual plaster.

Clean the outside surface of your vitreous china product with mild soap and warm water. Wipe the entire surface completely dry with a clean, soft cloth.

Most toilet bowl cleaners are not harmful to the vitreous china surface of the toilet bowl. Please follow the bowl cleaner manufacturer's instructions carefully.

Do not use abrasive cleaners or solvents.

用户责任

安装完成进行清理时，切勿使用腐蚀性清洁剂，因为它们会刮伤座便器表面，使色彩变得黯淡。使用温水和液体清洁剂来清洁表面。

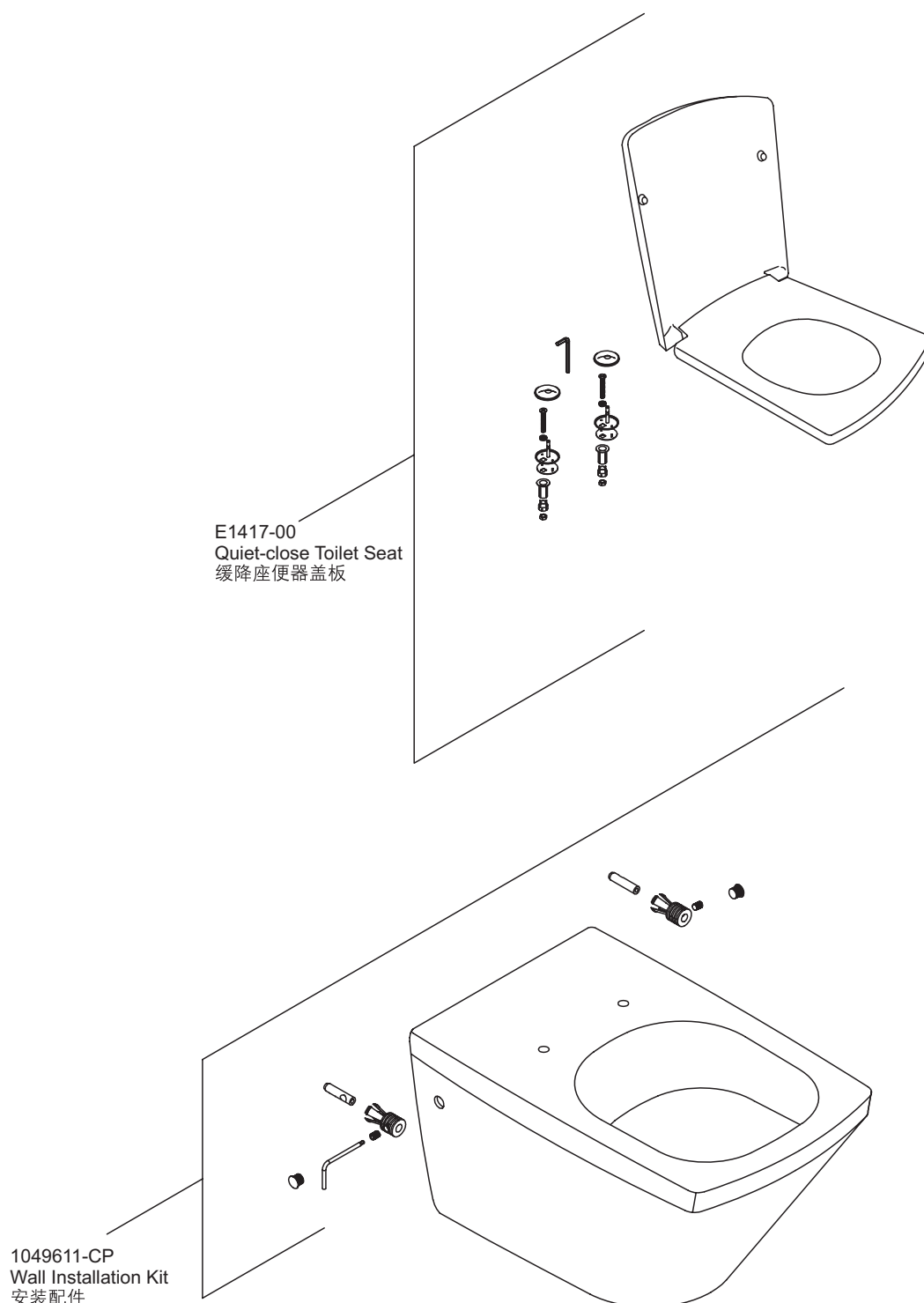
使用松节油或油漆稀释剂，清除顽固污渍、油漆或柏油。切勿让含有石油提炼物的清洁剂长时间接触座便器表面。

使用木片小心地刮除油灰，切勿使用金属刮刀，钢丝球，或其它的金属工具。使用粉末状清洁剂和湿布柔和地擦去油灰。

使用中性肥皂和温水清洁釉面陶瓷产品的表面。擦拭整个表面，用干净的软布擦干。

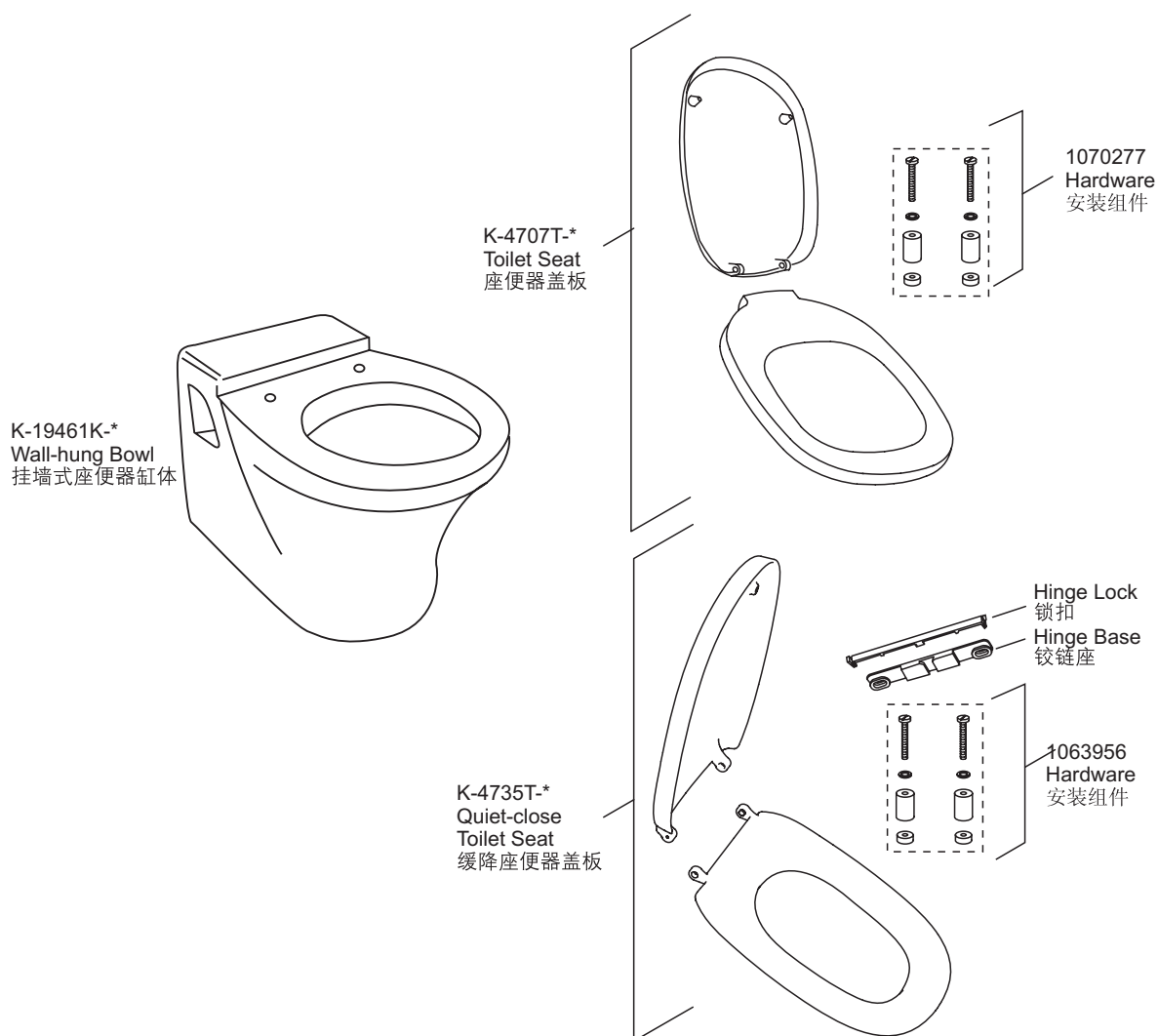
大多数马桶清洁剂对座便器表面是无害的，请认真遵循马桶清洁剂制造商的指示来操作。

请勿使用腐蚀性清洁剂或溶剂。



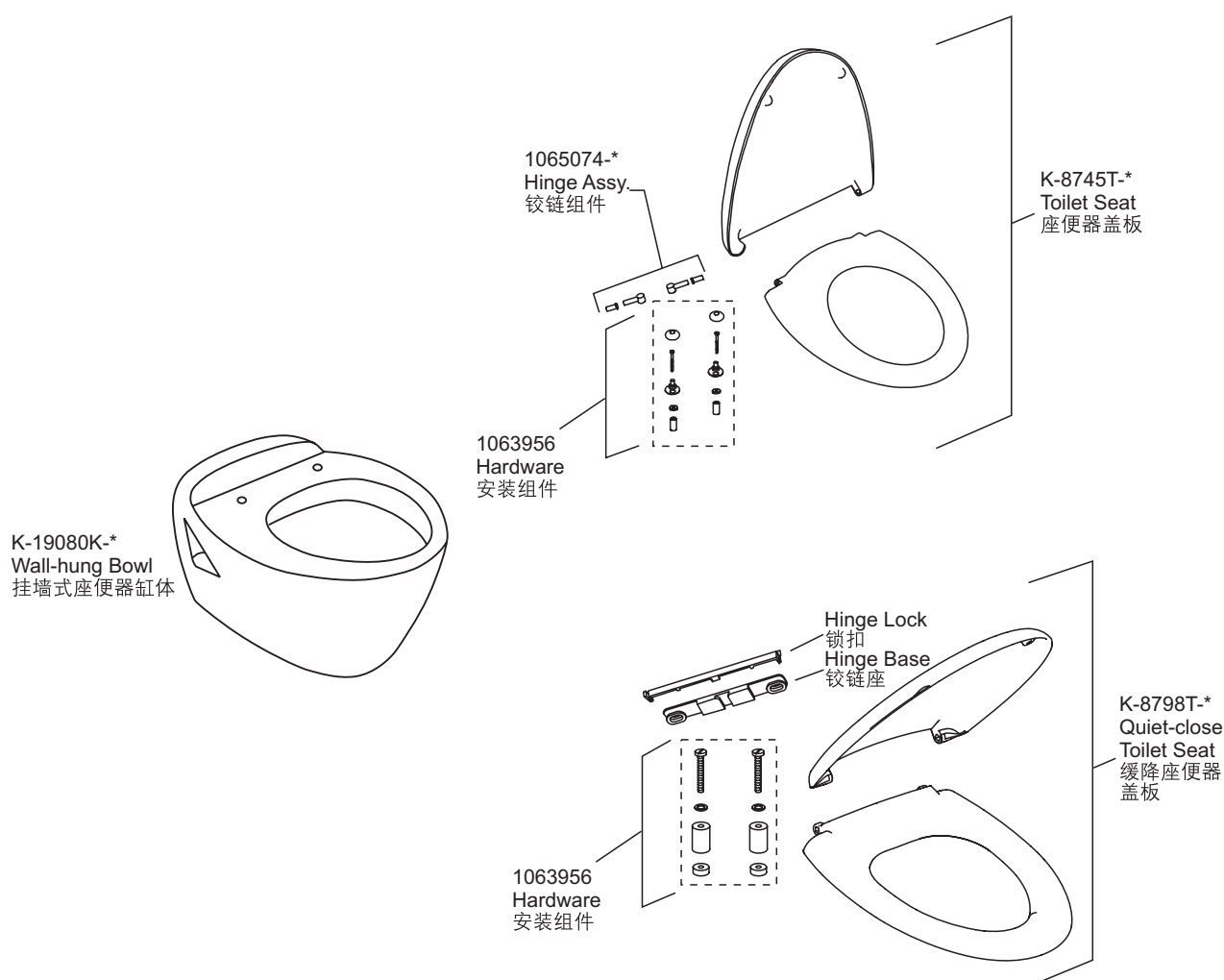
*订购时请说明颜色编号

* Color code must be specified when ordering.



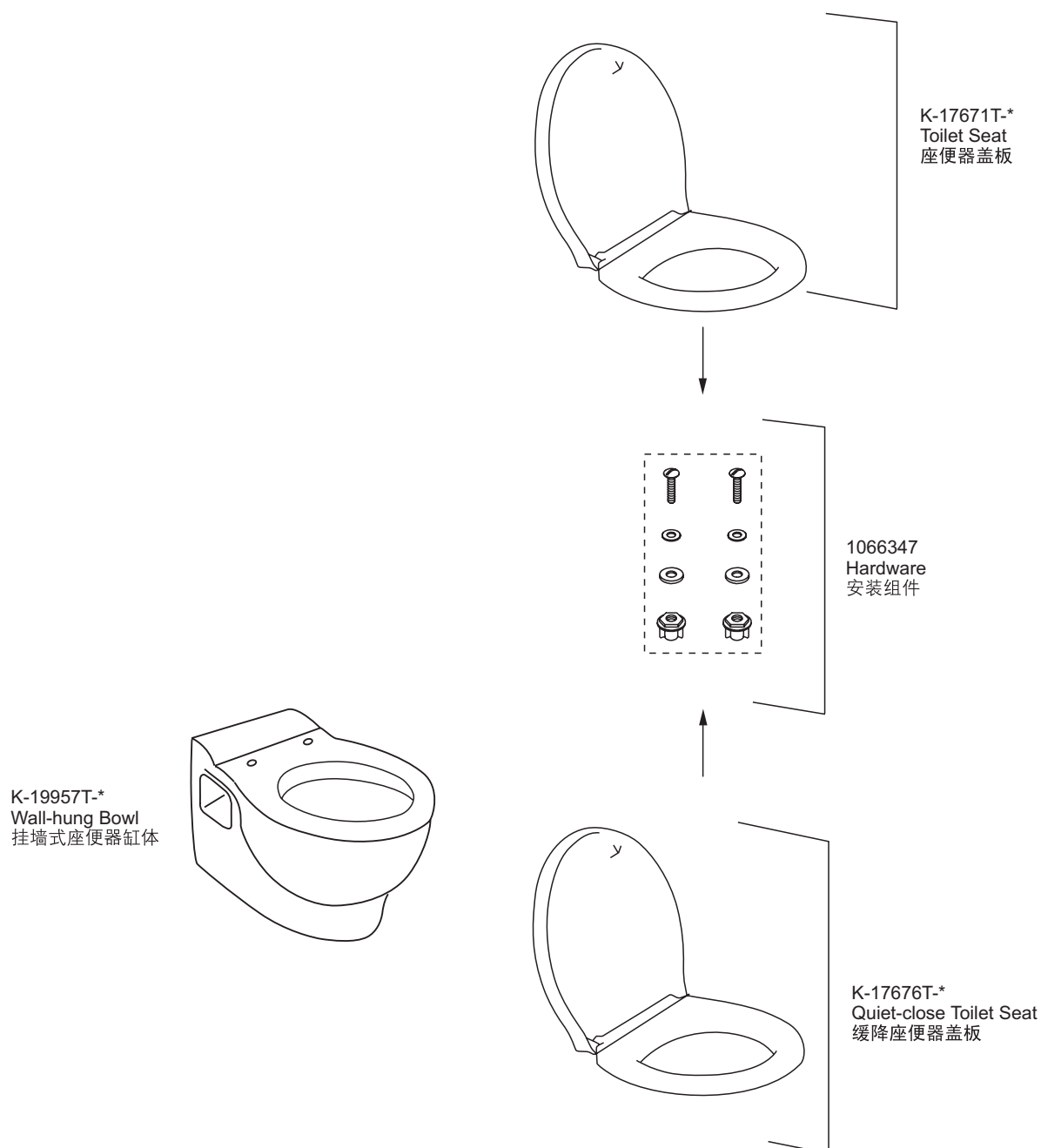
*订购时请说明颜色编号

* Color code must be specified when ordering.



*订购时请说明颜色编号

* Color code must be specified when ordering.



*订购时请说明颜色编号
* Color code must be specified when ordering.